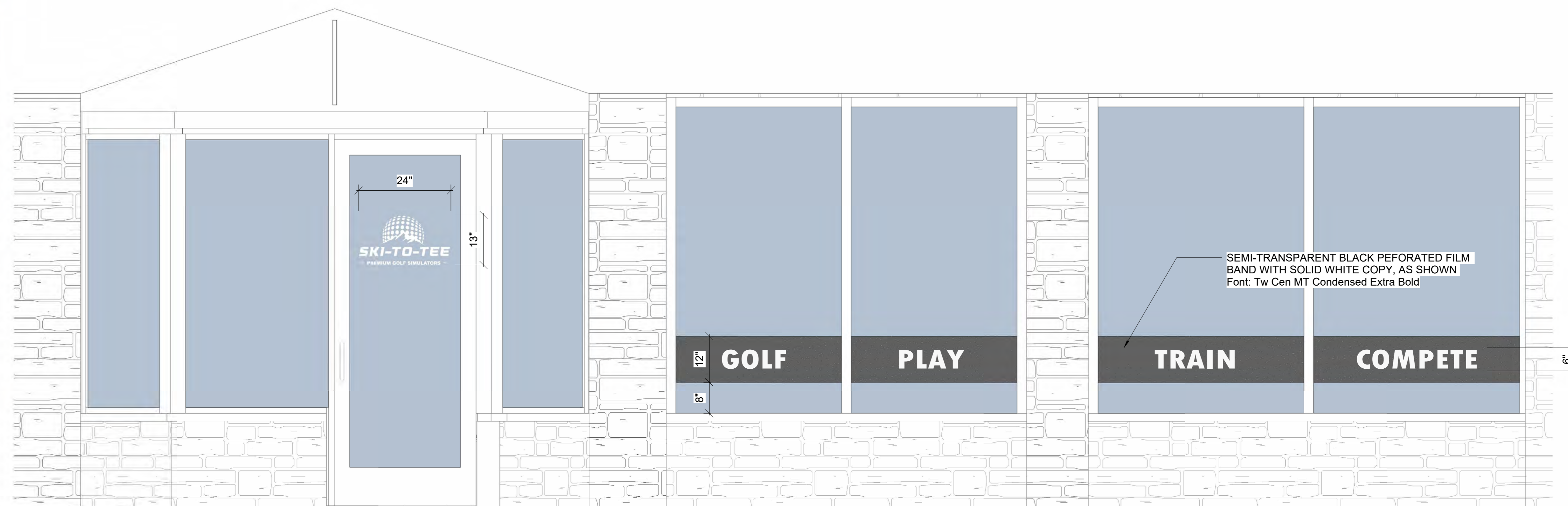




RENDERING



RENDERING

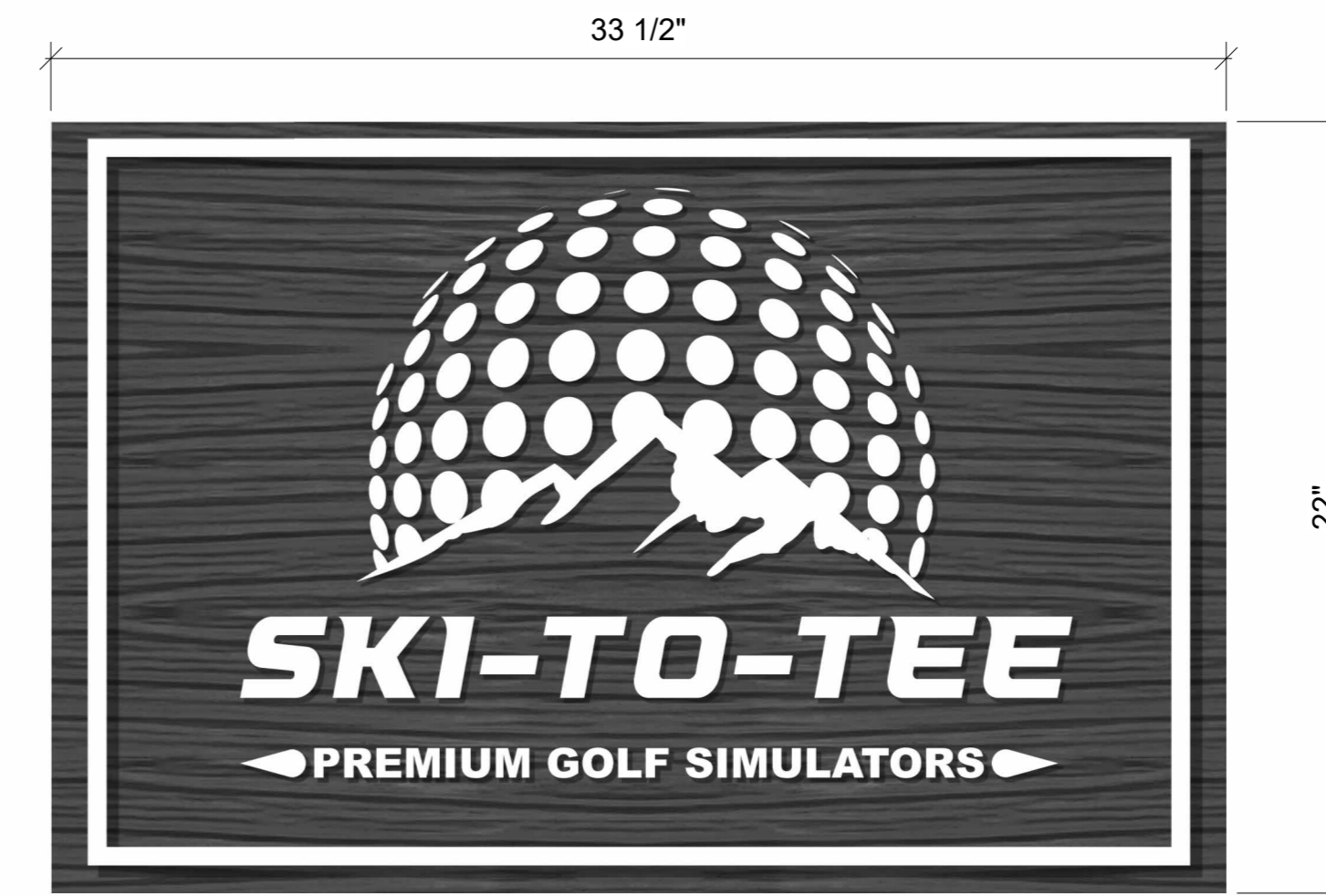


1 BUSINESS ENTRY ELEVATION
A5.90 3/4" = 1'-0"



WINDOW SIGN (DOOR)

MATERIAL: PROFESSIONALLY PRINTED GRAPHICS AFFIXED TO GLASS
 SIZE: 24.0" X 13.0" (2.2 sq ft)
 COLOR: WHITE



ARCADE SIGN

MATERIAL: HDU SIGN FOAM HAND CARVED TO LOOK LIKE WOOD
 LASER CUT ACRYLIC LETTERING (1/2" RAISED)
 FINISH: 1SHOT SIGN ENAMEL-BASED SIGN PAINT
 SIZE: 33.5" X 22.0" (5.1 sq ft)
 BRACKET: BLACK POWDER COATED METAL



COLOR (BACKGROUND): BLACK
 CMYK (69-63-62-58)
 RGB (51-51-51)
 COLOR (GRAPHICS): WHITE

ZEHREN
 AND ASSOCIATES, INC.
 ARCHITECTURE - PLANNING - INTERIORS
 LANDSCAPE ARCHITECTURE
 27 A-2 East de la Cuera Street
 Santa Barbara, California 93101
 (805) 963-6890

MECHANICAL: N/A
 ELECTRICAL: TBD BY CONTRACTOR

48 East Beaver Creek Blvd., Suite 303
 P.O. Box 1976 - Avon, Colorado 81620
 (970) 949-0257

CIVIL: N/A
 STRUCTURAL: N/A

**SKI TO TEE TENANT
 IMPROVEMENT**

100 Dercum Square Buffalo Lodge (Unit E-3)
 Keystone, CO 80435

ISSUE No. DATE COMMENT

NEW SIGNAGE

PROJECT No. 233060.00

DATE 01/01/2024

DRAWN BY LH

CHK BY TRV BY

SHEET No. **A5.90**

SCALE: As indicated