

ALCOVE TOWNHOMES

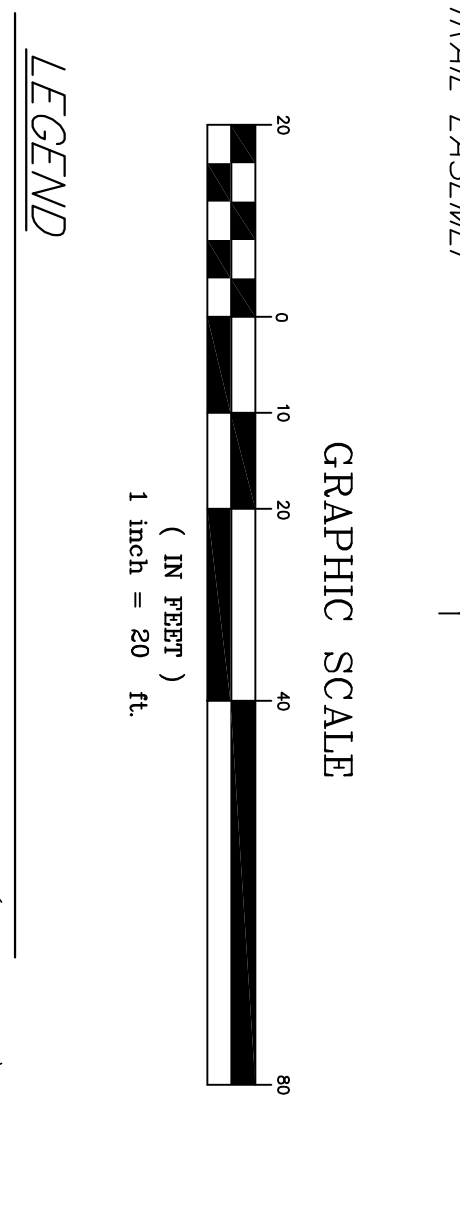
A PORTION OF
REMAINDER OF LOT 3
RIVER RUN ROAD
50' UTILITY & PRIVATE
ACCESS EASEMENT
CO. ROAD NO. 190

A RESUBDIVISION OF LOT 3AR, KEYSTONE BASE I, FILING NO. 2
ACCORDING TO THE PLAT RECORDED 11/23/2022 AT RECEPTION NO. 1301165
LOCATED IN THE N.W. 1/4 OF SECTION 19, T.5S., R.76W. OF THE 6TH P.M.
SUMMIT COUNTY, COLORADO
SHEET 2 OF 2



TOWNHOMES BOUNDARY LINE TABLE

LINE	BEARING	LENGTH	LINE	BEARING	LENGTH
L42	S79°37'00"W	2.25	L128	N102°31'00"E	10.88
L43	S79°37'00"W	2.25	L129	S72°58'46"E	10.88
L44	N02°31'00"E	11.00	L130	N102°31'00"E	11.00
L45	N02°31'00"E	9.81	L131	N102°31'00"E	11.00
L46	N02°31'00"E	3.25	L132	N102°31'00"E	11.00
L47	S79°37'00"E	15.47	L133	N73°59'46"W	11.83
L48	N102°31'00"E	2.00	L134	S73°59'46"W	10.98
L49	N102°31'00"E	2.00	L135	S10°21'14"W	2.01
L50	S79°37'00"E	2.00	L136	N102°31'00"E	2.00
L51	S79°37'00"E	11.00	L137	N102°31'00"E	2.00
L52	N02°31'00"W	9.81	L138	N102°31'00"E	2.00
L53	S79°37'00"W	7.85	L139	S16°21'31"W	8.00
L54	S79°37'00"W	11.00	L140	S73°59'46"W	2.00
L55	S79°37'00"W	2.25	L141	S73°59'46"W	2.00
L56	N02°31'00"W	2.25	L142	S73°59'46"W	2.00
L57	N02°31'00"W	2.25	L143	S73°59'46"W	2.00
L58	N02°31'00"E	4.25	L144	N23°58'29"W	6.82
L59	N02°31'00"E	15.47	L145	N23°58'29"W	6.82
L60	S79°37'00"E	15.47	L146	S16°21'31"W	13.00
L61	N02°31'00"E	13.83	L147	S16°21'31"W	4.87
L62	N102°31'00"E	2.00	L148	S02°15'43"W	9.29
L63	N102°31'00"E	2.00	L149	S02°15'43"W	9.29
L64	N102°31'00"W	2.25	L150	S02°15'43"W	4.12
L65	N102°31'00"W	9.81	L151	N02°31'00"E	11.83
L66	S79°37'00"E	7.85	L152	S73°59'46"W	10.98
L67	S79°37'00"E	11.00	L153	S16°21'31"W	2.12
L68	S02°15'43"W	2.25	L154	S73°59'46"W	10.98
L69	N02°31'00"E	7.85	L155	S73°59'46"W	10.98
L70	N02°31'00"E	9.81	L156	S73°59'46"W	11.83
L71	S79°37'00"E	11.00	L157	N16°21'31"W	11.00
L72	S79°37'00"E	11.00	L158	N16°21'31"W	6.82
L73	S02°15'43"W	7.85	L159	N16°21'31"W	6.82
L74	S02°15'43"W	7.85	L160	N16°21'31"W	11.00
L75	S16°21'31"W	11.83	L161	N16°21'31"W	3.00
L76	S16°21'31"W	11.83	L162	N02°31'00"E	19.00
L77	N102°31'00"E	10.88	L163	N02°31'00"E	11.00
L78	N102°31'00"E	11.00	L164	N16°21'31"W	6.00
L79	S16°21'31"W	11.83	L165	N16°21'31"W	2.00
L80	S16°21'31"W	10.88	L166	S16°21'31"W	4.12
L81	S73°59'46"E	2.12	L167	S16°21'31"W	9.29
L82	S73°59'46"E	11.83	L168	S16°21'31"W	4.87
L83	S73°59'46"E	11.00	L169	S16°21'31"W	10.88
L84	S73°59'46"E	2.12	L170	S16°21'31"W	11.00



Drawn JJK
Checked JJK
Date 07/20/2024
Project 21555
Sheet 1 of 2

R-A-N-G-E-W-E-S-T
ENGINEERS & SURVEYORS
P.O. Box 589
Silverthorne, CO 80498 970-468-6281

NOTE: ACCORDING TO COLORADO LAW, YOU MUST COMMENCE ANY LEGAL ACTION BASED UPON ANY DEFECT IN THIS SURVEY WITHIN THREE YEARS AFTER YOU FIRST DISCOVER SUCH DEFECT, IN NO EVENT LATER THAN FIVE YEARS AFTER THE DATE OF THE SURVEY. THIS SURVEY IS THE CURRENT AND COMPLETE SURVEY FOR THE PROJECT AND SUPERSEDES ALL PREVIOUS SURVEYS FOR THE PROJECT.